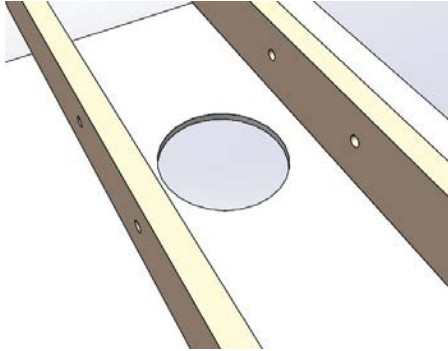
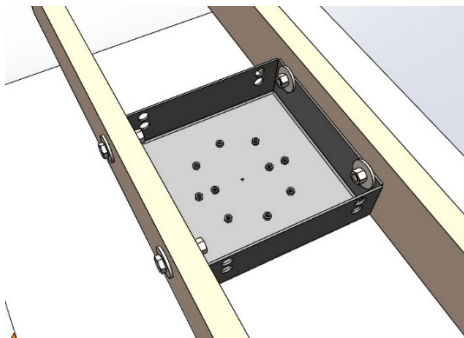


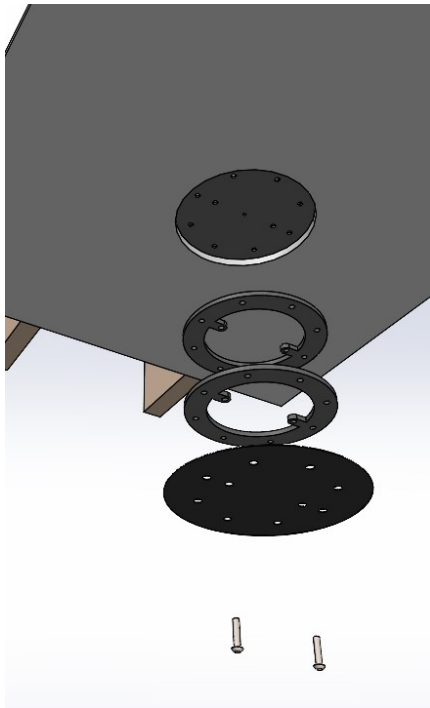
FireBob 69 Bioethanol Installation



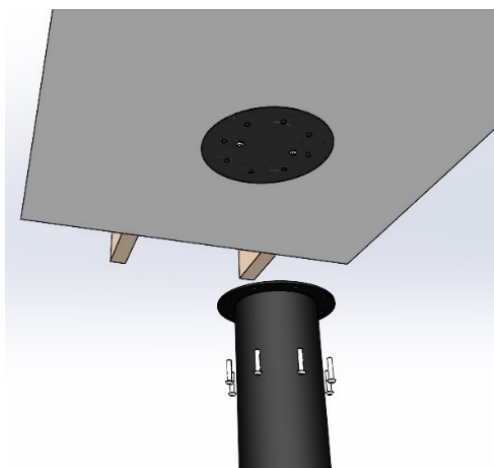
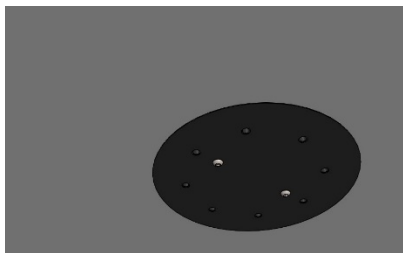
The fixing bracket is 350mm wide and can be bolted to the ceiling timbers. Frame out the ceiling, if required, to suit the bracket. Cut a hole in the ceiling plasterboard 240mm diameter.



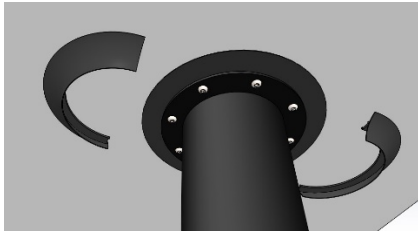
Bolt the ceiling bracket centrally over the hole. The bracket should rest on the plasterboard.



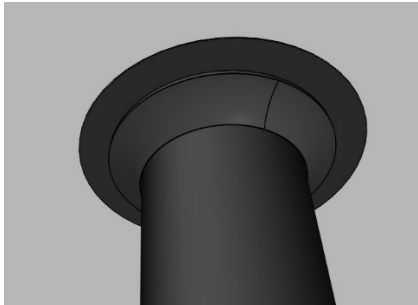
Bolt the spacers (as many as required), plus the ceiling cover into place. Use enough spacers so that the ceiling cover is almost touching the ceiling plasterboard. The ceiling cover should not clamp-up tightly to the plasterboard ceiling.



Jack-up the fire and bolt to the ceiling bracket using the 8 x M8 bolts.



Put the ceiling collar in position using the magnets.



Finished!